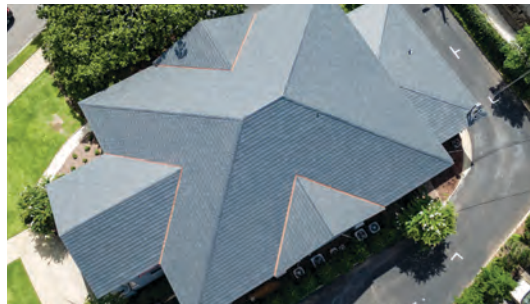




EcoStar Slate Versus Natural Slate

	EcoStar Synthetic Slate	Natural Slate
Cost	<ul style="list-style-type: none"> • Lower material and labor cost • Approximately 3lb. / sq. ft. • 1/2" plywood required • Lower initial cost • Lower lifecycle cost 	<ul style="list-style-type: none"> • Requires additional structure • Weight is 10-24lbs. / sq. ft. • 5/8" to 3/4" plywood required • Higher initial cost • Higher lifecycle cost
Maintenance	<ul style="list-style-type: none"> • Can walk on it for other building maintenance issues • Doesn't crack, chip or fall out 	<ul style="list-style-type: none"> • Periodic maintenance required, without foot traffic • Potential liability from falling or breaking slate • Cracked, chipped slate requires repair
Life Expectancy	<ul style="list-style-type: none"> • 50-year warranty with life expectancies higher than 50 years 	<ul style="list-style-type: none"> • 50 Year + Warranty
Quality	<ul style="list-style-type: none"> • Quality is factory controlled • Made with recycled content to provide superior flexibility and resistance to impact, wind and harsh weather conditions 	<ul style="list-style-type: none"> • Long lead times • Uncertain sourcing • Inconsistent color • Involves depletion of natural resources and other environmental issues • Must be installed by qualified installer
Color	<ul style="list-style-type: none"> • Colorfast • Does not fade, it weathers • Available in a wide range of standard and custom colors and blends 	<ul style="list-style-type: none"> • Unfading colors weather over time • Semi-weathering color can be inconsistent
Warranty	<ul style="list-style-type: none"> • 50-year material & 50-year material and labor warranties available • Class A or C fire rating available • Class 4 impact resistance • 90/110 mph wind warranty available 	<ul style="list-style-type: none"> • Varies by quarry provider





EcoStar Shake Versus Natural Shake

	EcoStar Synthetic Shake	Natural Shake
Cost	<ul style="list-style-type: none"> • Lower installed cost • Lower lifecycle cost 	<ul style="list-style-type: none"> • Wide material cost fluctuations • Higher lifecycle cost
Maintenance	<ul style="list-style-type: none"> • Mold and mildew resistant • Little to no maintenance required to achieve full life expectancy • Can be walked on 	<ul style="list-style-type: none"> • Periodic maintenance required, without foot traffic • Debris must be cleared • Mold and mildew growth common
Life Expectancy	<ul style="list-style-type: none"> • 50-year warranty with life expectancies higher than 50 years 	<ul style="list-style-type: none"> • Performance depends on factors like shade, climate, thickness, quality and maintenance • Without proper maintenance 12-18 year life expectancy
Quality	<ul style="list-style-type: none"> • Quality is factory controlled • Made with recycled content to provide superior flexibility and resistance to impact, wind and harsh weather conditions 	<ul style="list-style-type: none"> • Quality depends on small independent mill operations • Wide variation in quality
Color	<ul style="list-style-type: none"> • Colorfast • Does not fade, it weathers • Available in a wide range of standard and custom colors and blends 	<ul style="list-style-type: none"> • Inherent color changes from brown to grey to bronze depending on species • Color matching is difficult
Warranty	<ul style="list-style-type: none"> • 50-year material & 50-year material and labor warranties available • Class A or C fire rating available • Class 4 impact resistance • 90/110 mph wind warranty available 	<ul style="list-style-type: none"> • Warranty only applicable if roof is treated • To obtain warranty, product must be installed by a certified installer according to the Cedar Shake and Shingle Bureau • Warranty does not cover problems with color, cracking or splitting • Fire Rating available in certain markets • Fire Rating requires coating

