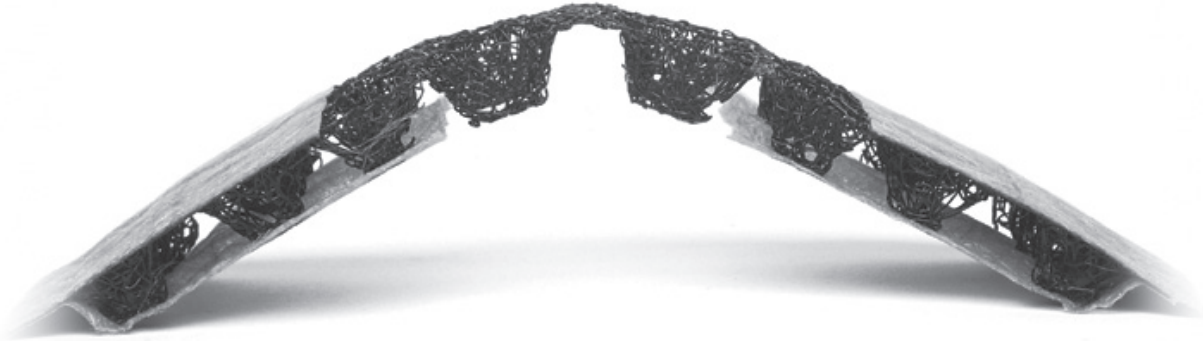
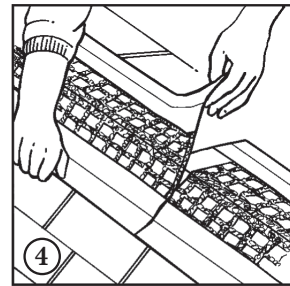
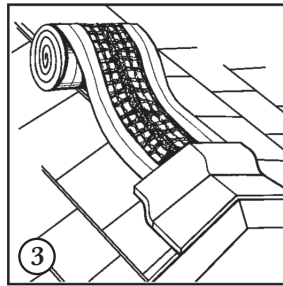
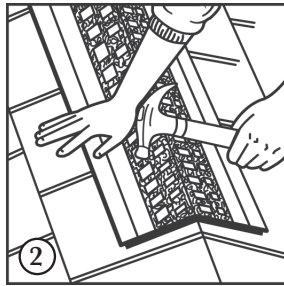
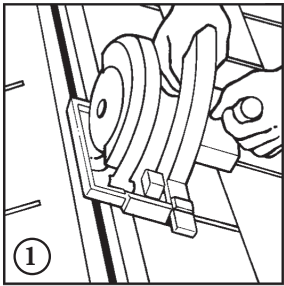




# EcoVent™ Installation Guide



# INSTALLATION GUIDE



- ① Snap chalk line and cut a slot 3” wide (1-1/2” on each side of ridge beam). Allow for a closed area of sheathing 18” at both ends of ridge.
- ② EcoVent can be installed right to gable ends using an integral end cap. To create end cap, loosen about 6” of matrix from fabric and cut out with snips. Fold bottom fabric in toward center of product so that it covers the end of vent. Start and end vent installation 1” from gable ends.
- ③ Center vent over slot at one end with nail lines “up” and fasten with two nails. Roll out along entire ridge, pullout slack, and fasten with two nails at opposite end (creating end cap at other end). Center ridge cap shingles over vent and install with “EcoStar” nails provided. Use nail line as placement guide. Hang shingles 1” over vent at gable ends. Nails must penetrate into sheathing 3/4” or completely through the sheathing.
- ④ To splice, remove about 3” of nylon matrix from fabric and lay end of new roll inside remaining fabric to create fabric overlap.



42 Edgewood Drive | Holland, NY 14080 | Tel: 800.211.7170 | [www.ecostarllc.com](http://www.ecostarllc.com)